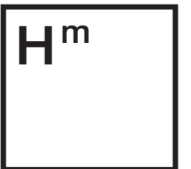
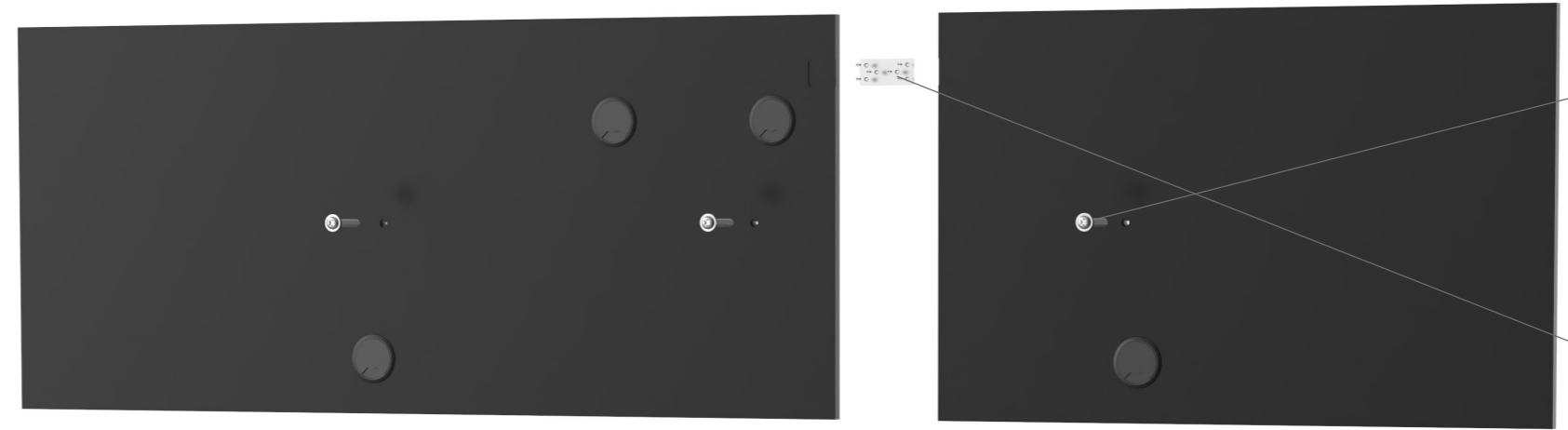


Montageanleitung
Medienstele W8 XXL, L², XL² mobil
Assembly instruction
Media column_W8 XXL, L², XL² mobile



Holzmedia



Step 5



M6x35

Step 4



3,5x16

Step 3



Step 2

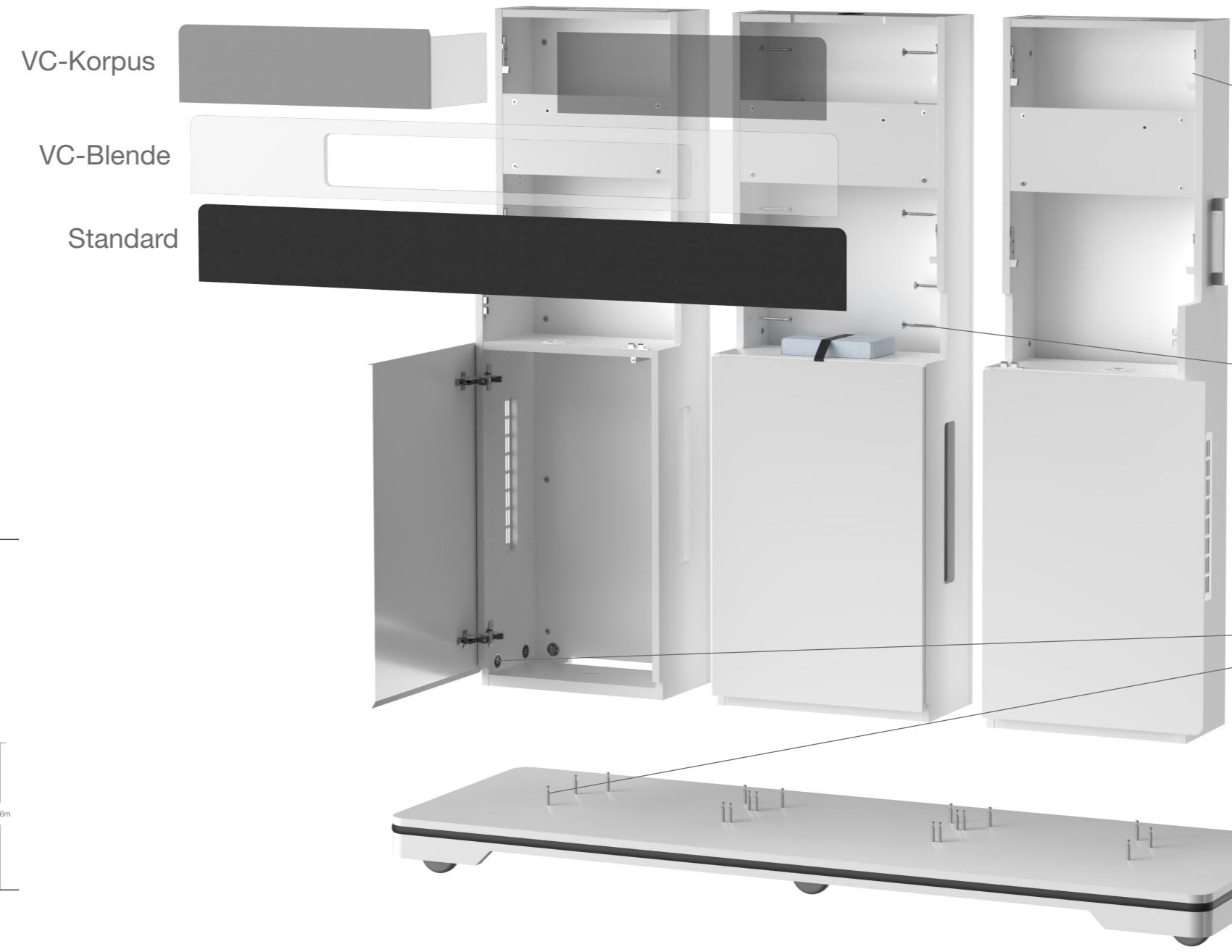


4x35

Step 1



MAXIFIX

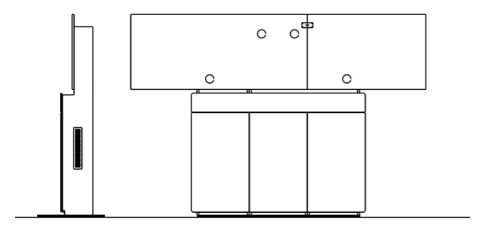


VC-Korpus

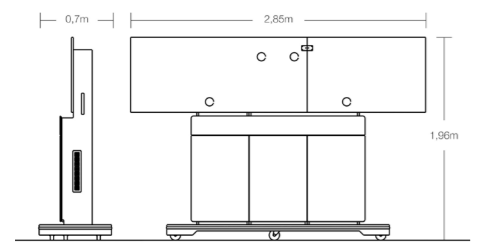
VC-Blende

Standard

Version metal base plate



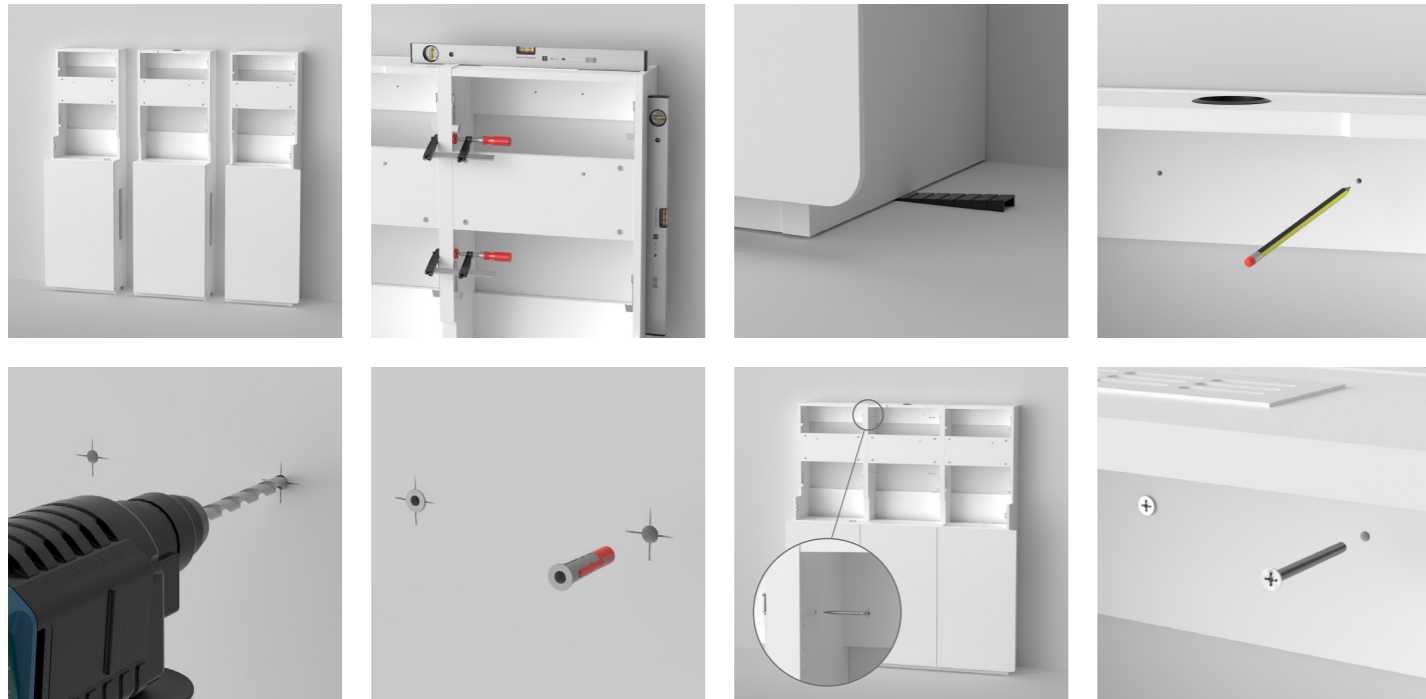
Standard



Montagevideo
Assembly video

Ausrichtung und Befestigung (Betonwände)

Alignment and fastening (concret walls)



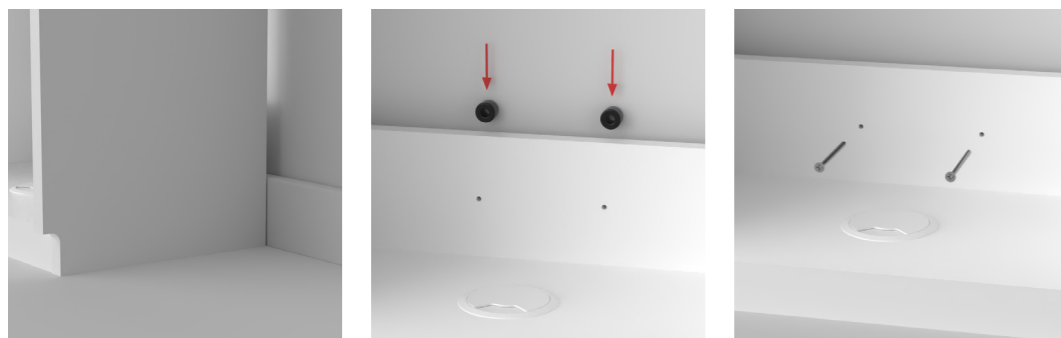
Ausrichtung und Befestigung (Holzwände)

Alignment and fastening (wooden walls)



Bei Sockelleisten Abstandshalter verwenden

For skirting boards use spacers



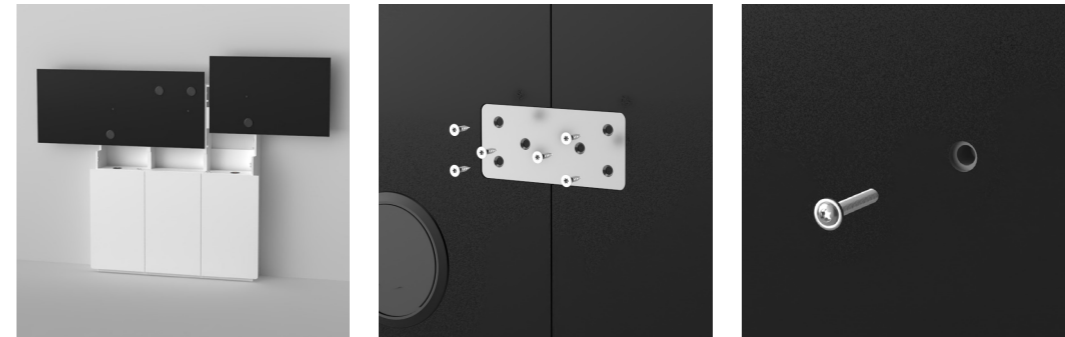
Bei weiteren Fragen stehen wir Ihnen gerne zur Verfügung.

If you have any further questions, please do not hesitate to contact us.

Holzmedia GmbH
Neue Str. 10 - 71576 Burgstetten - Germany
Phone: +49 7191 3447-0
info@holzmedia.de
www.holzmedia.de

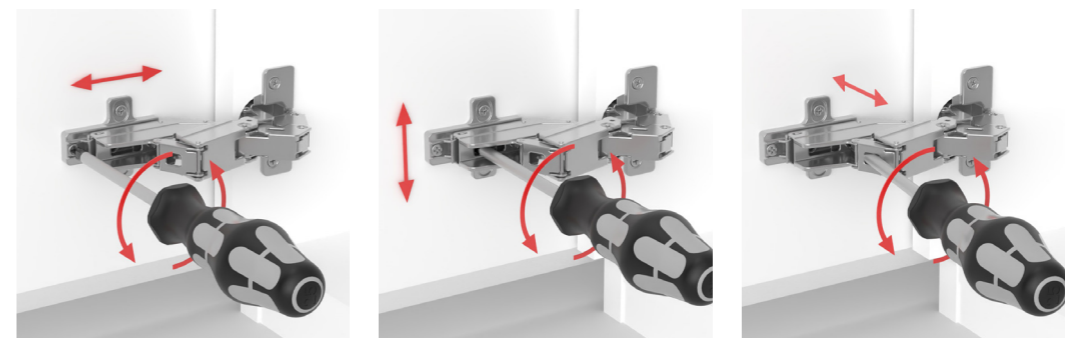
Displayboard 2 teilig

Displayboard 2 parts



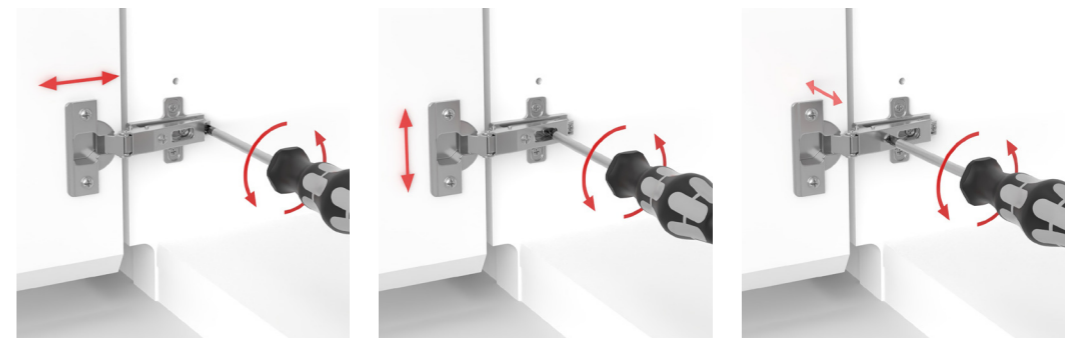
Außentüren

Side doors



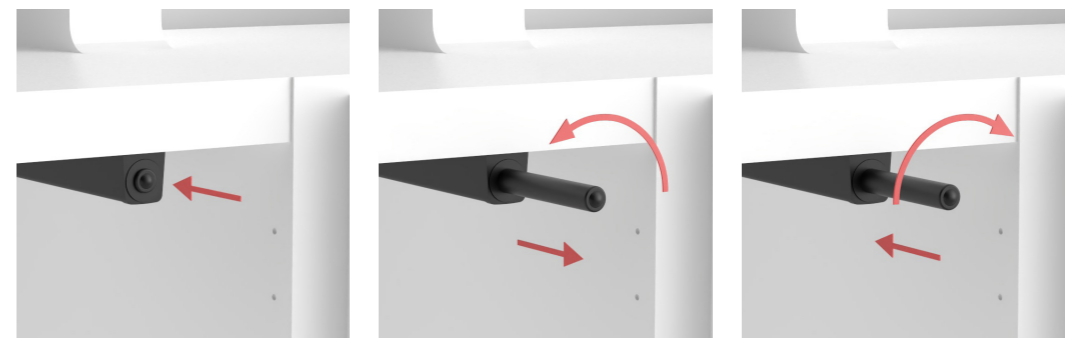
Mitteltüren

Center doors



Push to open

Push to open



Montagevorrichtung für VC-Bars

Mounting plates for VC-Bars

